

**NEW YORK SEA GRANT NEMO
GIS ENHANCEMENT PROJECT
NON-POINT EDUCATION OF MUNICIPAL OFFICIALS**

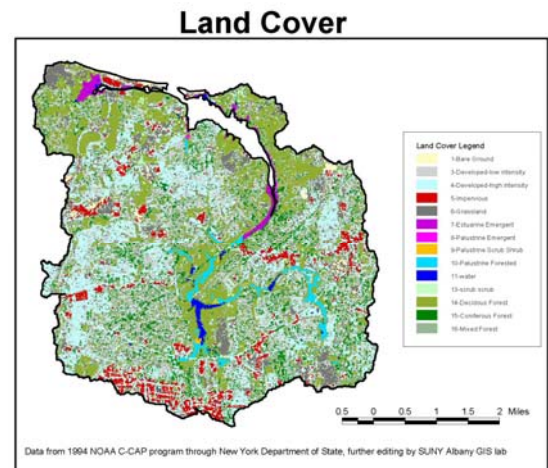
**ENVIRONMENTAL
PLANNING
CONSULTING**

**FEASIBILITY & DUE
DILIGENCE ASSISTANCE
REGIONAL & SITE
PLANNING
ECONOMIC PLANNING
ENVIRONMENTAL SITE
ASSESSMENT
ENVIRONMENTAL SCIENCE
& ANALYSIS
WETLAND PERMITTING
STORM WATER
MANAGEMENT PLANS
WATERFRONT & COASTAL
ZONE PROJECTS
MAPPING
WATERSHED MANAGEMENT
& WATER SUPPLY
PERMITTING & PROCESSING**

**NELSON POPE
& VOORHIS**

572 Walt Whitman Road
Melville, New York
11747

PHONE: 631-427-5665
FAX: 631-427-5620
NPV@NELSONPOPE.COM



Nelson Pope & Voorhis developed GIS graphics and presentation materials pertaining to the Nissequogue River land use and natural resource impacts to assist the non-point source pollution management strategy for the NY NEMO Program. Data pertaining to land use, land cover, natural resources, surface and groundwater drainage, zoning, topography, and water quality classifications was gathered from multiple sources including town, county and village governments as well as the New York Department of Environmental Conservation, the New York State Department of State, and the New York State GIS Clearinghouse. The Nissequogue drainage basin boundaries and sub-drainage areas were delineated and additional data including on-site sanitary septic system areas, land cover, land use, shellfishing areas, groundwater discharge to Long Island Sound, municipal boundaries, zoning and significant natural resources were compiled into GIS graphic maps and layouts. These maps and figures were used by NY NEMO GIS Enhancement Project for collaborative planning and research efforts with New York Sea Grant and the NOAA Coastal Management Program, the National Sea Grant College Program, the National NEMO Network and the NOAA Coastal Services Center.

