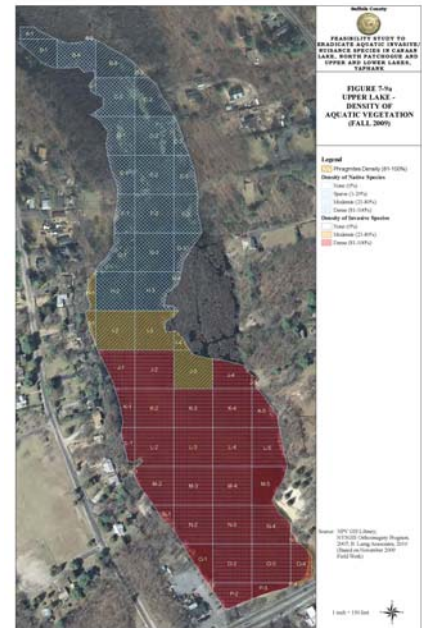
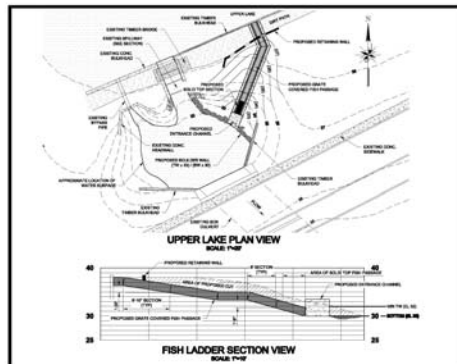


# FEASIBILITY STUDY TO ERADICATE AQUATIC INVASIVE/NUISANCE SPECIES CANAAN LAKE, NORTH PATCHOGUE & UPPER & LOWER LAKES, YAPHANK

**ENVIRONMENTAL  
PLANNING  
CONSULTING**

**FEASIBILITY & DUE  
DILIGENCE ASSISTANCE  
REGIONAL & SITE  
PLANNING  
ECONOMIC PLANNING  
ENVIRONMENTAL SITE  
ASSESSMENT  
ENVIRONMENTAL SCIENCE  
& ANALYSIS  
WETLAND PERMITTING  
STORM WATER  
MANAGEMENT PLANS  
WATERFRONT & COASTAL  
ZONE PROJECTS  
MAPPING  
WATERSHED MANAGEMENT  
& WATER SUPPLY  
PERMITTING & PROCESSING**



NP&V was the lead project team member for this County-funded project which involved two components,

- 1) feasibility for aquatic weed eradication, and
- 2) fish ladder design

With assistance from team members B.Laing Associates and Stony Brook University, historic and existing lake conditions were characterized (including detailed aquatic plant inventory and mapping, bathymetry surveys, water quality analyses) and a thorough evaluation of alternatives for the control of two nuisance aquatic weeds - fanwort (*Cabomba caroliniana*) and twoleaf watermilfoil (*Myriophyllum heterophyllum*). The second component included the preparation of conceptual design plans for fish ladders at both Upper Lake and Lower Lake Dams on the Carmans River to remediate barriers to native diadromous fish populations. N&P engineers and Orson Environmental Consulting were both subcontracted to assist with the fish ladder design. NP&V developed the Suffolk County Lakes website ([www.suffolkcountylakes.net](http://www.suffolkcountylakes.net)) as a companion website for the project.

**NELSON POPE  
& VOORHIS**

572 Walt Whitman Road  
Melville, New York  
11747

PHONE: 631-427-5665  
FAX: 631-427-5620  
NPV@NELSONPOPE.COM

